

## Infrastructure & Operations

### Plastic Free July

A display was placed in the Coventry Library in Stirling to coincide with Plastic Free July.

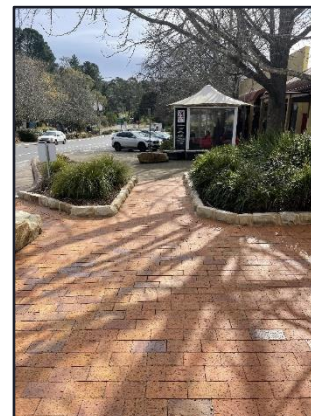


### Plastic Free July Webinar

AHC participated in an online webinar sharing what we are doing internally to reduce single use plastics. To view the webinar go to [www.ahc.sa.gov.au](http://www.ahc.sa.gov.au) - passcode =@K?SW6B

### Stirling Main Street – Bus Shelter Renewal

The bus shelter between the Hokey Pokey Sweet shop and Audre Lynx Clothes shop has been replaced with a new cantilever shelter. Designed for minimum impact on the adjoining shops, this mostly glass structure gives an open feel to the street without obstructing views. New paving and garden edging replaces the random mix of surfaces and relocation of the phone box has allowed for the activation of the space with potential for small event usage. Future works in this space include bike racks, ground anchors to suit a marquee and lockable power bollard to assist with events.



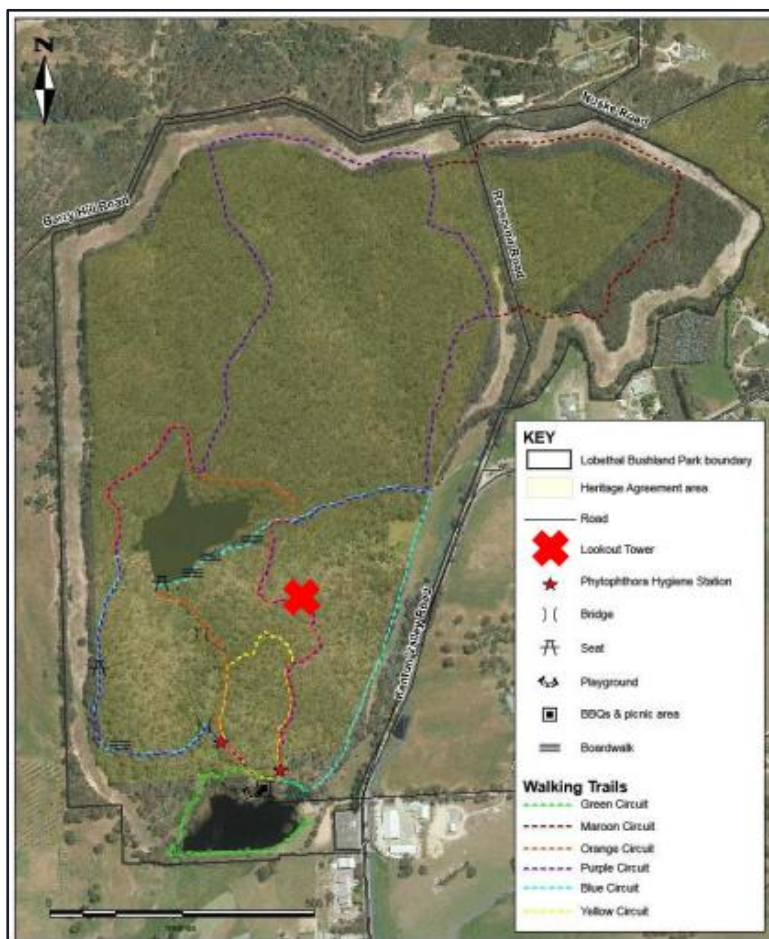
**Lobethal Bushland Park - Lookout Tower Renewal works**

The Lookout tower at Lobethal Bushland Park was significantly damaged with the main structural components destroyed by the Cudlee Creek Bushfire.

As a part of Local Roads and Community Infrastructure Program the Lookout tower renewal works have now been completed.

New tower features include:

- Improved safety improvements along the stairways and on the viewing platform, installing additional safety barriers.
- An additional landing area along the widen stairways to achieve a Panoramic view around the hills.
- Fully refurbished the remains of the previous tower structure.
- Refurbished seating facility around the tower.



### **Heathfield Resource Recovery Centre - Construction of a Concrete Hard Stand Area**

As a part of Local Roads and Community Infrastructure Program and on behalf of Adelaide Hills Regional Waste Management Authority (AHRWMA), a concrete Hard Stand area has now been installed to replace the previous gravel surface area within the recyclable material storage bays at the complex.

The purpose of the work is for environmental safety improvements within the various types of recyclable waste material storage bays to prevent surface erosion and to avoid possible hazardous material infiltration into the ground.

Work involved with construction of a 200mm reinforced concrete slab to approx. 250m<sup>2</sup> area, surrounded by approx. 330m<sup>2</sup> of hot mix surface area to facilitate heavy vehicle movements.



### **Entranceway of Sherry Park, Mylor**

Crews installed a new asphalt apron to the entranceway of Sherry Park. This was completed in time for the opening of the Mylor BMX Bike Track. The apron provides a much better and safer transition from the carpark out onto Strathalbyn Road.



### **Road Repairs**

During periods of wet weather failures in the road pavement can occur with underground water present. Crews have been busy digging these out and replacing the base ready for an asphalt patch.



**Bushfire recovery revegetation project - Croft Road car park / Anderson Hill winery at Cudlee Creek**

AHC has recently collaborated with Forestry SA and volunteers from the Mountain Bike group Rise Racing on a revegetation project around Croft Road Fox Creek Bike Park / Anderson Hill Winery at Cudlee Creek. Forestry SA will be doing some planting for screening of the mountain bike park infrastructure and other landscaping, and Council Biodiversity staff assisted with screening and wind break planting within the Croft Road reserve. Local indigenous plants were sourced through Forestry SA, Council and the Landscapes Hills & Fleurieu Board. A terrific team effort by all and big thanks to Forestry SA for providing BBQ lunch for the 20 enthusiastic volunteers and staff.

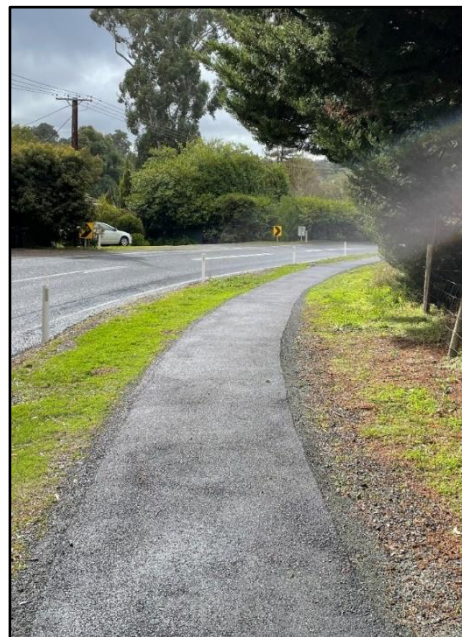


**Footpath Renewals**

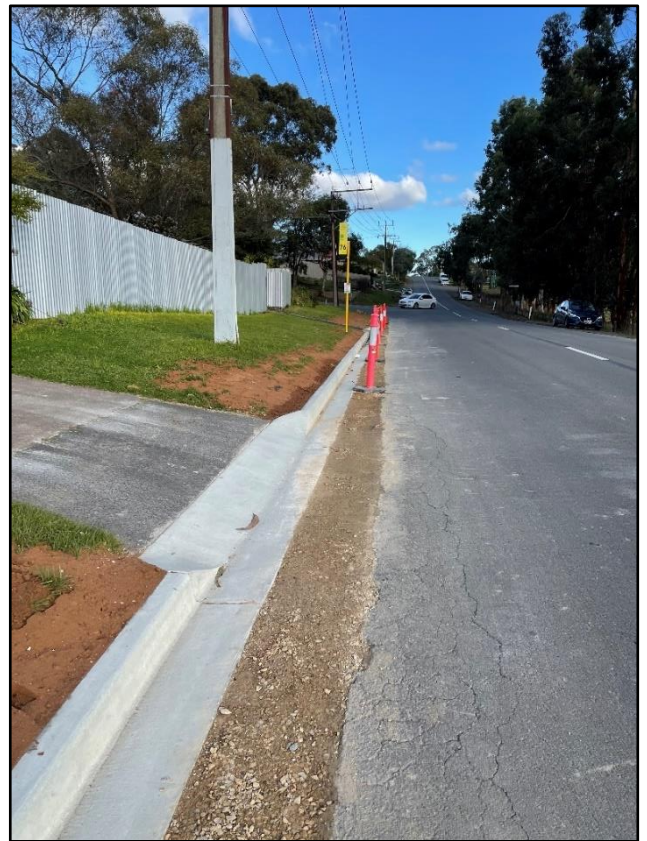
Greenhill Road, Uraidla



**Kerb Renewals**



Ridge Road, Lobethal



**Aldgate DDA access / amenity project**

This project is now complete, providing DDA compliant access to the newly upgraded toilet block and linking the shops with the bus stop / toilet block barrier free. Installations include a wombat crossing and new footpath towards the toilet block, new bus shelter with new benches, new picnic settings, new pavement and much enlarged garden beds for the trees.







**Crafers Pocket Park**

Construction for the new access path and picnic area with shelter is nearing completion as is the planting.

