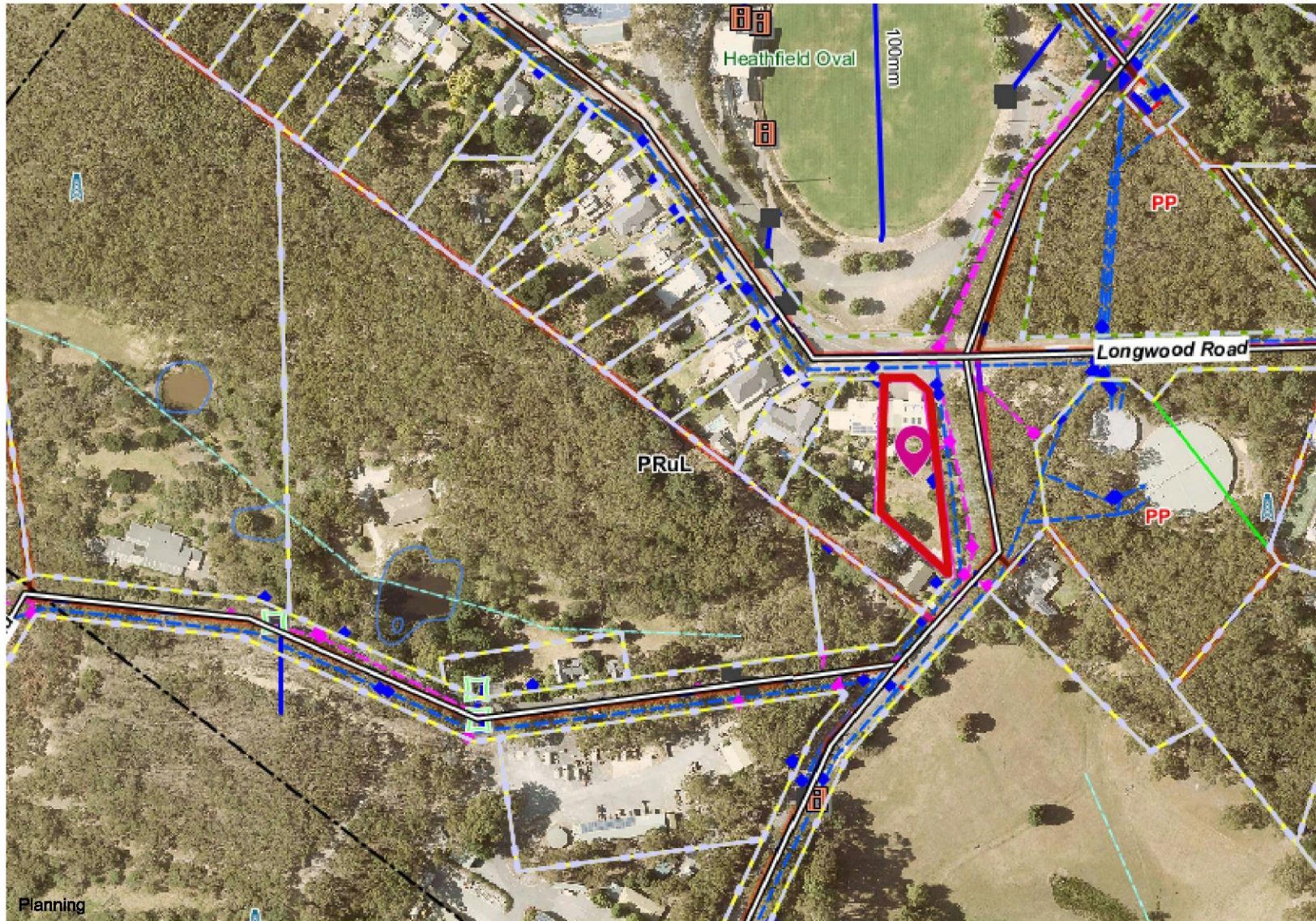


160 Longwood Road
Heathfield 5153



DISCLAIMER
Apart from any use permitted under the Copyright Act 1968, no part may be reproduced by any process without prior written permission obtained from the Adelaide Hills Council. Requests and enquiries concerning reproduction and rights should be directed to the Chief Executive Officer, The Adelaide Hills Council, PO Box 44, Woodside SA 5244. The Adelaide Hills Council, its employees and servants do not warrant or make any

representations regarding the use, or results of use of the information contained herein as to its correctness, accuracy, currency or otherwise. In particular, it should be noted that the accuracy of property boundaries when displayed over aerial photography cannot be considered to be accurate, and that the only certain method of determining boundary locations is to use the services of a licensed Surveyor. The Adelaide Hills Council, its

employees and servants expressly disclaim all liability or responsibility to any person using the information or advice contained herein. ©

Scale = 1:3016.440

100 m

