

REV	DATE	DESCRIPTION	CALC	FILED
0	22/04/2020	INITIAL RELEASE	JTH	JTH
ADDITIONS, AMENDMENTS AND APPROVALS				

**LEGEND**

<ul style="list-style-type: none"> <li>47.015 TOP MARK</li> <li>47.016 WATER TABLE</li> <li>47.017 FLOOR LEVEL</li> <li>47.018 INVERT LEVEL</li> <li>47.019 TAP</li> <li>47.020 WATER METER</li> <li>47.021 SPRINKLER / IRROG VALVE</li> <li>47.022 PROPANET</li> <li>47.023 DOMESTIC OUTLET</li> <li>47.024 DOWNPIPE</li> <li>47.025 DOMESTIC BLEND</li> <li>47.026 HYDRO-PNEUMATIC TANK</li> <li>47.027 REP / GRATING</li> <li>47.028 GUTTER LEVEL</li> <li>47.029 UNDERSIDE EAVE LEVEL</li> <li>47.030 OVERSIDE EAVE LEVEL</li> <li>47.031 TRAFFIC LIGHT</li> <li>47.032 SIGNPOST</li> <li>47.033 LITTER BIN</li> <li>47.034 MAIL BOX / SIGNAL BOX</li> <li>47.035 TELEPHONE MACHINE</li> <li>47.036 ROAD / ELEC SERVICE</li> <li>47.037 WATER METER / FIP</li> <li>47.038 TRANSDUCER / METER</li> <li>47.039 GAS SERVICE</li> <li>47.040 GUTTER LEVEL</li> <li>47.041 UNDERSIDE EAVE LEVEL</li> <li>47.042 OVERSIDE EAVE LEVEL</li> <li>47.043 TRAFFIC LIGHT</li> <li>47.044 SIGNPOST</li> <li>47.045 LITTER BIN</li> <li>47.046 MAIL BOX / SIGNAL BOX</li> <li>47.047 TELEPHONE MACHINE</li> <li>47.048 ROAD / ELEC SERVICE</li> <li>47.049 WATER METER / FIP</li> <li>47.050 TRANSDUCER / METER</li> <li>47.051 GAS SERVICE</li> </ul>	<ul style="list-style-type: none"> <li>47.052 POWER LIGHT POLE</li> <li>47.053 CABLE MARKER</li> <li>47.054 STAKE / STAKEHEAD</li> <li>47.055 POST / SIGNPOST</li> <li>47.056 WATER METER / FIP</li> <li>47.057 TRANSDUCER / METER</li> <li>47.058 GAS SERVICE</li> <li>47.059 ELEC OVERHEAD</li> <li>47.060 GATE</li> </ul>	<ul style="list-style-type: none"> <li>47.061 EDGE OF ROSETT</li> <li>47.062 POLE / SIGNPOST</li> <li>47.063 TREE / SHRUB</li> <li>47.064 POWER / LIGHT POLE</li> <li>47.065 CABLE MARKER</li> <li>47.066 STAKE / STAKEHEAD</li> <li>47.067 POST / SIGNPOST</li> <li>47.068 WATER METER / FIP</li> <li>47.069 TRANSDUCER / METER</li> <li>47.070 GAS SERVICE</li> <li>47.071 ELEC OVERHEAD</li> <li>47.072 GATE</li> </ul>	<ul style="list-style-type: none"> <li>47.073 BOTTOM OF BANK</li> <li>47.074 TOP OF BANK</li> <li>47.075 CHANGE OF GRADE</li> <li>47.076 DRAIN</li> <li>47.077 RESERVE PIPE LUG</li> <li>47.078 TEL CABLE LUG</li> <li>47.079 WATER PIPE LUG</li> <li>47.080 BUILDING</li> <li>47.081 WALL</li> <li>47.082 CONCRETE</li> <li>47.083 ASPHALT</li> <li>47.084 BITUMEN</li> <li>47.085 GATE</li> </ul>	<p><b>COORDINATE SYSTEM</b></p> <p>VERTICAL: AHD          HORIZONTAL: GROUND PLANE ORIENTED          TO IGA 2020 ZONE 54          SCALE: HORIZONTAL (CSF = 1.00004942)</p> <p><b>ADOPTED STATION &amp; AUTHORITY</b></p> <p>PSM 6628/2372 RL: 498.939 SDB          E: 293981.268 SDB          N: 6125168.965 SDB</p> <p>SDB Director SA Government survey data base values / (Dated: 08/03/2020)</p>
--	--	--	---	--

**ALEXANDER & SYMONDS PTY. LTD.**

1:200 ORIGINAL SHEET SIZE A3

CONTOUR INTERVAL: 0.5m min, 2.0m MAJ

SURVEY: JTH APRIL 2020

DRAWN: JTH 22/04/2020

CHECKED: MRE 22/04/2020

Alexander & Symonds Pty Ltd  
 31 King William Street Kent Town,  
 South Australia 5067  
 PO Box 1000 Kent Town, SA 5071  
 ABN 93007 753 988

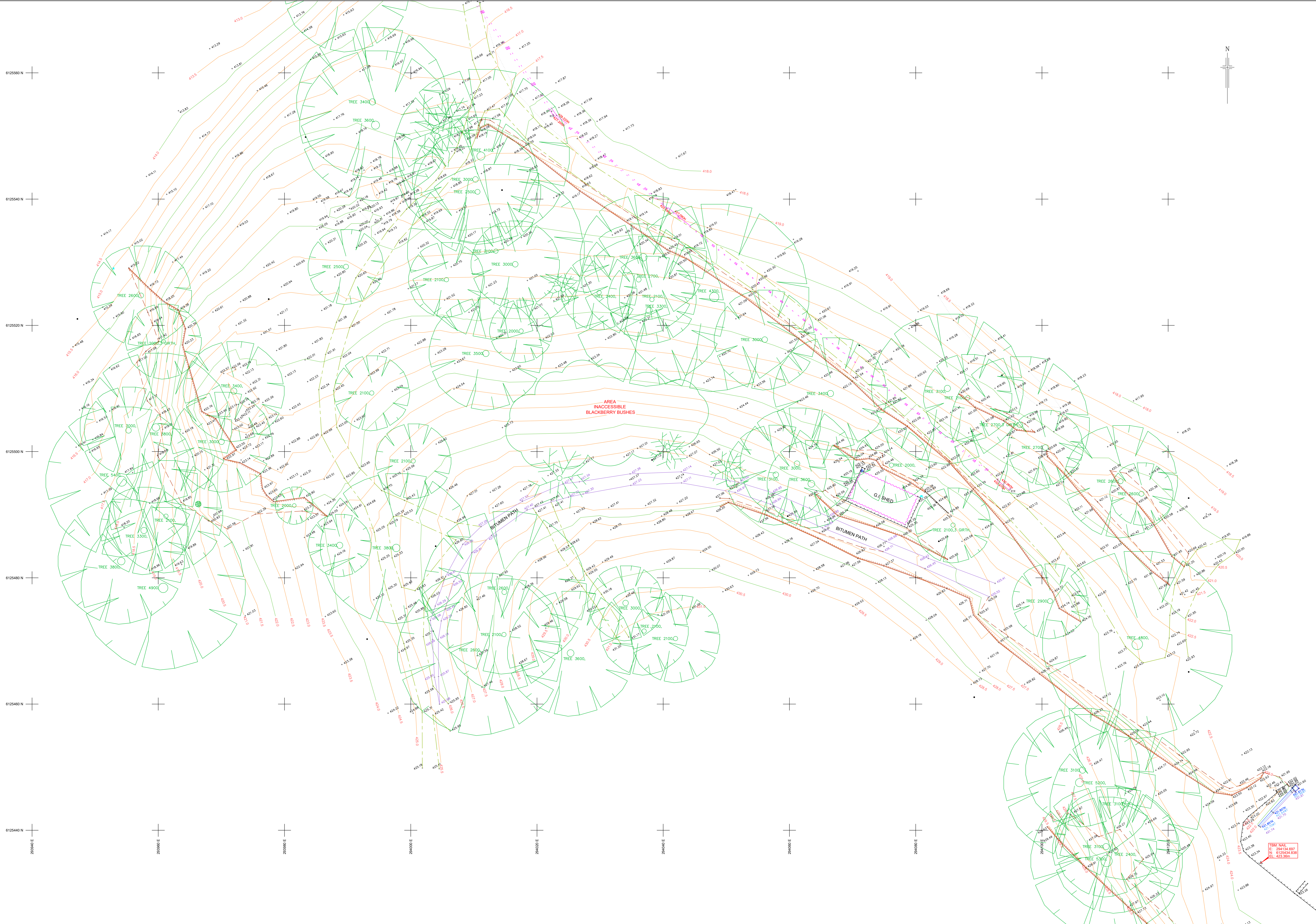
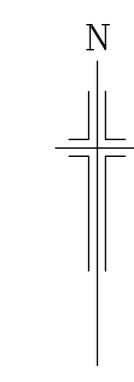
T (08) 8130 1666  
 F (08) 8130 0999  
 W www.alexander.com.au  
 E a.s@alexander.com.au

+ Property + Land Development +  
 + Construction + Mining +  
 + Spatial Information Management +

**Alexander & Symonds**  
 Surveying  
 Consultants

**DETAIL AND LEVEL SURVEY**  
**STIRLING GOLF CLUB**  
**STIRLING**

DRAWING No: A036720 DETAIL SHEET 1 OF 1 REVISION: 0



Aerial photography supplied by NearMap, date \_\_\_\_\_

REV	DATE	DESCRIPTION	CALC	FIELD
		ADDITIONS, AMENDMENTS AND APPROVALS		

LEGEND	
<ul style="list-style-type: none"> <li>41235 TOP KERN</li> <li>41236 WATER TABLE</li> <li>41237 FLOOR LEVEL</li> <li>41238 1st FL. INSET LEVEL</li> <li>41239 TAP</li> <li>41240 WATER METER</li> <li>41241 SPRINKLER / IRIG VALVE</li> <li>41242 HYDRANT</li> <li>41243 DOMESTIC OUTLET</li> <li>41244 DOWNPIPE</li> <li>41245 DOMESTIC SEWER</li> <li>41246 SEWER MANHOLE</li> <li>41247 SEWER MANHOLE</li> <li>41248 REP / GRATING</li> </ul>	<ul style="list-style-type: none"> <li>41235 PSM / C/S</li> <li>41236 SURVEY MARK</li> <li>41237 BENCHMARK</li> <li>41238 CABLE MARKER</li> <li>41239 30mm HOODING POLE</li> <li>41240 POST / FRIARLAND</li> <li>41241 SEWER MANHOLE</li> <li>41242 UNKNOWN POINT / SERVICE</li> </ul>

COORDINATE SYSTEM	
VERTICAL:	AHD
HORIZONTAL:	GROUND PLANE ORIENTED
TO MGA 2020 ZONE 54	
SCALE: GROUND (CSF = 1.00004942)	

ADOPTED STATION & AUTHORITY	
PSM 6628/2370	RL: 462.33 SDB
PSM 6628/2370	E: 293981.268 SDB
PSM 6628/2370	N: 6125168.965 SDB
SDB denotes SA Government survey data base	

<p>Notes:</p> <p>Property boundaries and assessments shown herein have been completed from government records and show discrepancies in Certificate of Title documents.</p> <p>Boundaries have not been verified by field survey. Construction or design on or near boundaries or assessments will require additional survey work.</p>	
<p>Scale: 1:200</p> <p>Original Sheet Size: A4</p> <p>Contours Interval: MIN 0.5m MAJ 2.0m</p> <p>Survey: DJH 02.06.2021</p> <p>Drawn: DJH 09.06.2021</p> <p>Checked: SJC 14.06.2021</p>	<p>Alexander &amp; Symonds Pty Ltd 11 King William Street Kent Town, South Australia 5067 PO Box 1000 Kent Town, SA 5071 ABN 93007 753 988</p> <p>Tel: (08) 8130 1666 Tel: (08) 8162 0999 www.alexander.com.au alex@alexander.com.au</p> <p>+ Property + Land Development + + Construction + Mining + + Spatial Information Management +</p>

**Alexander Symonds**  
Surveying  
Consultants

**DETAIL & LEVEL SURVEY**  
**STIRLING GOLF CLUB**  
**STIRLING**

DRAWING No: 21A1821-Detail(0)\_MGA20P

SHEET 1 OF 1

REVISION: 0